

What the surgeon wants to know

Pieter van Wyk

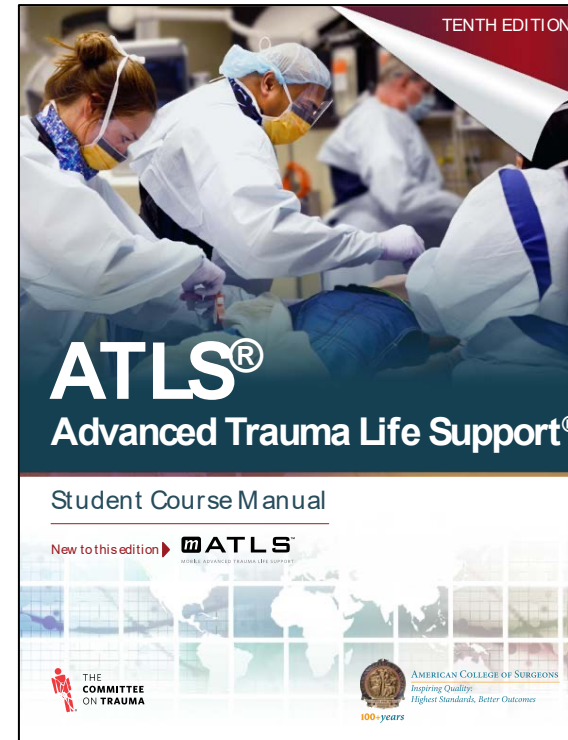
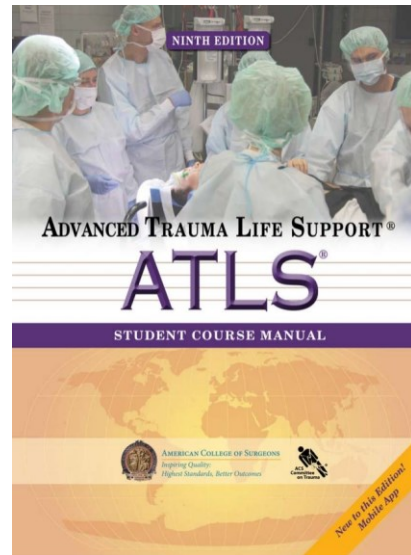
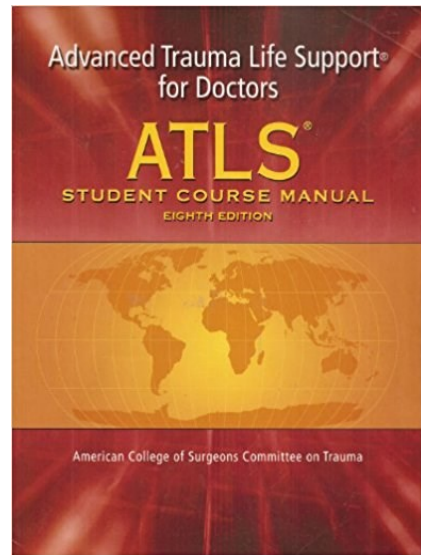
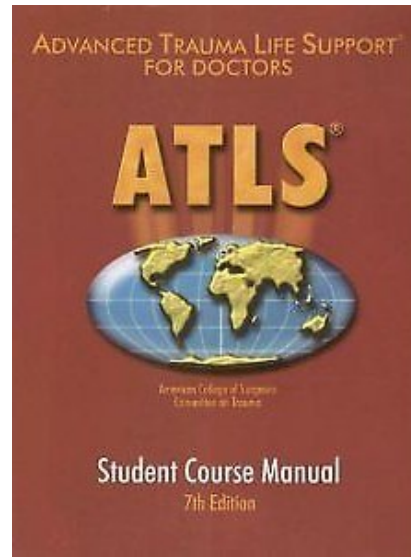
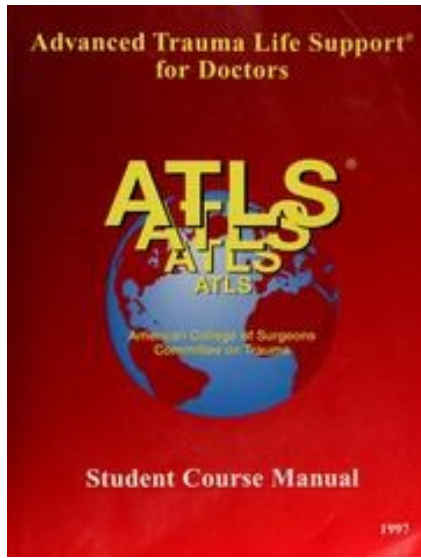
Traumacentrum Karolinska

No disclosures.

Overview



- Basic ED principles
- Pattern recognition
- Uncommon patterns





Primary Survey



Secondary survey



Definitive Management

Computed tomography

- Gastro-intestinal tract injury ?
- Diaphragmatic injuries ?
- Intra-peritoneal bladder injuries ?
- Path of the projectile: is the GIT *threatened* somehow?
 - Tangential vs. peritoneal penetration ?
 - Proximity to retroperitoneal viscera ?
- Solid organs: destructive injuries (devascularization)

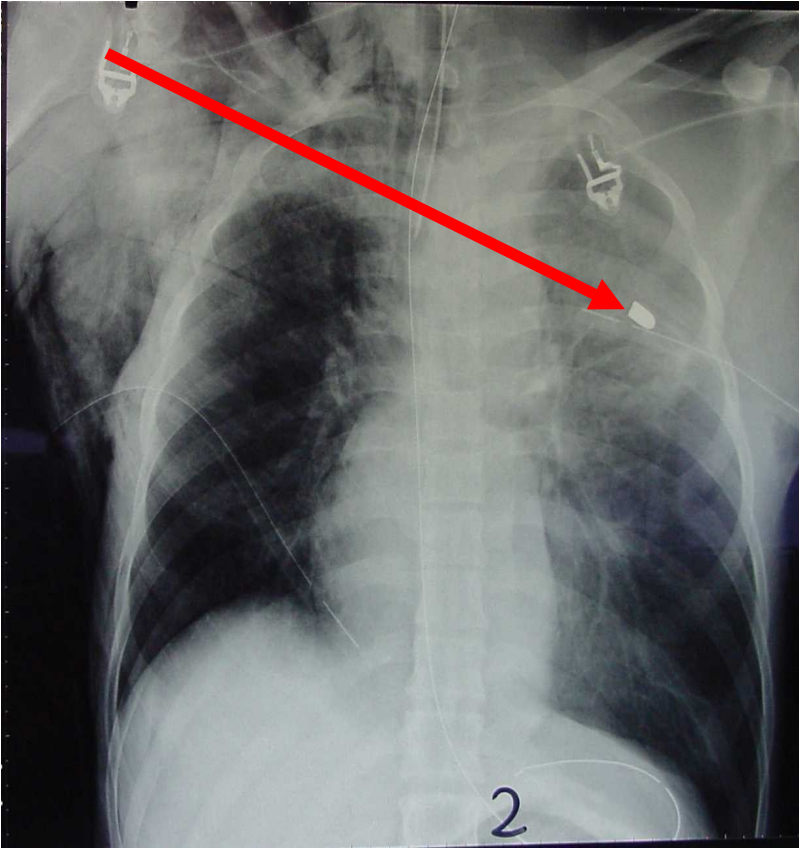
- Solid organs: extra-vascular contrast ?
- Vascular injuries: intimal defects, extraluminal contrast

Surgery

Endovascular



A word on plain films



A word on plain films

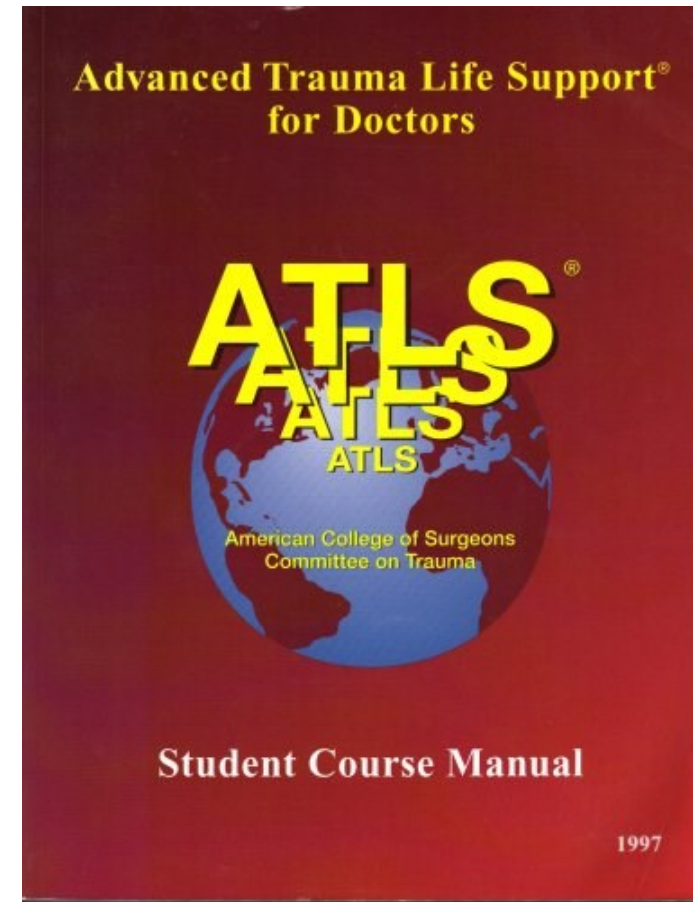


Blunt:

- Fractures rib 1 & 2 / scapula
- Mediastinal vascular injuries
- Chance fracture L1
- Posterior knee dislocations
- Floating knees

Penetrating

- Cardiac box
- Between nipple & costal margin

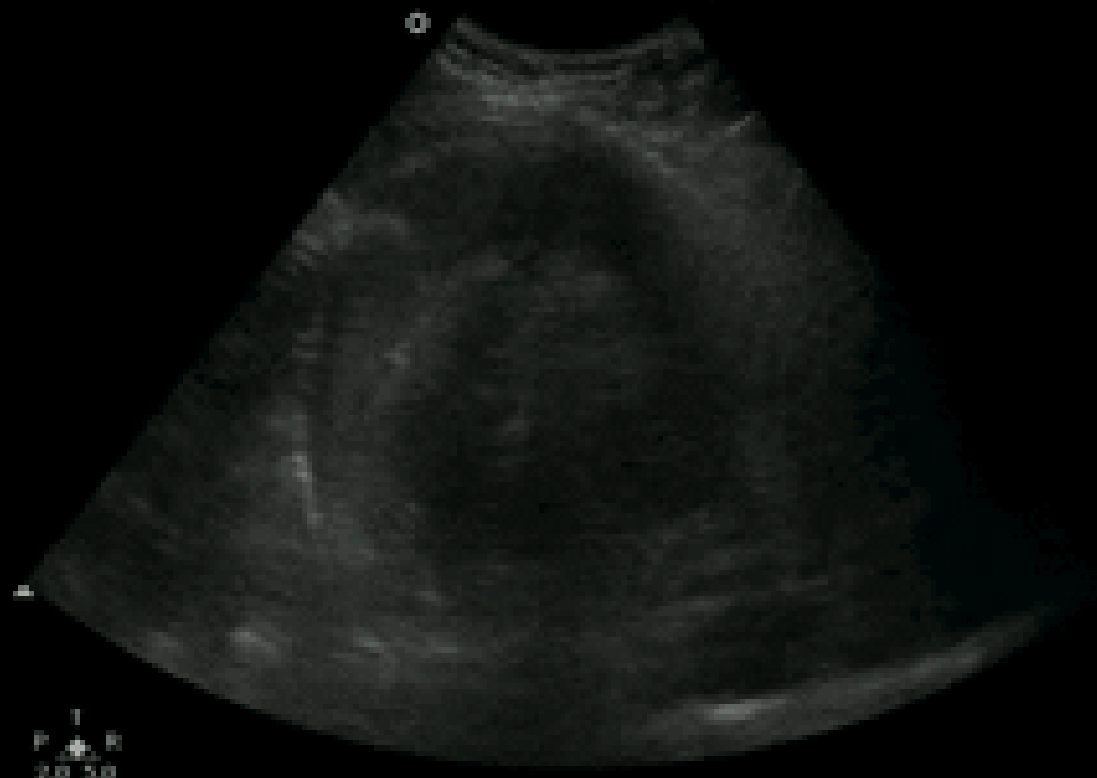


888,
0000

Emergency Department ARH

31-Dec-05
10:03:39 AM

PHILIPS
mrg



Renal
CS-2
MI 1.1
TIS 0.3
F2 Gn 65
202dB/C6
F/2/3
16Hz 16cm

1
P R
2.0 5.0

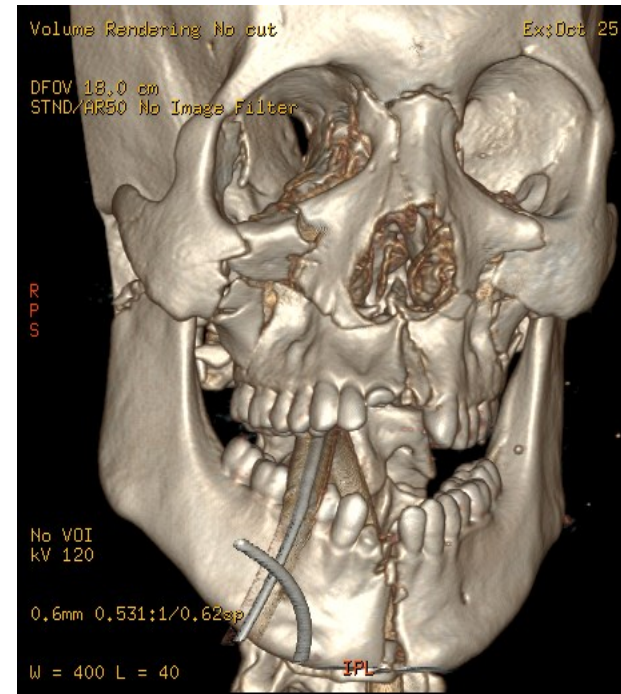
Cranial impalement injuries



vs.

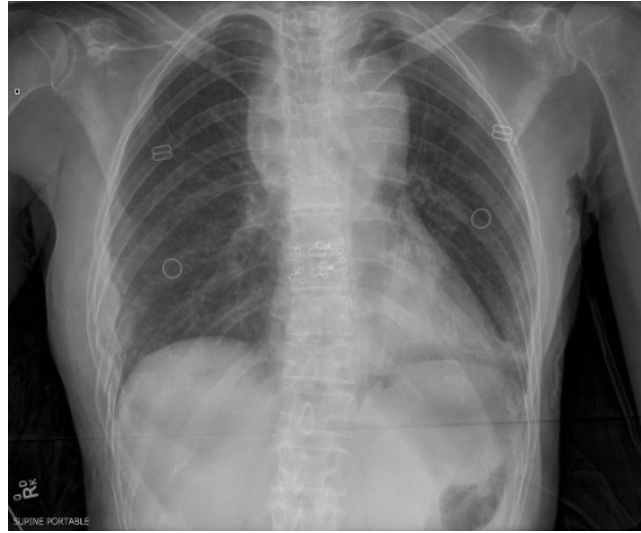


Blunt cerebrovascular injuries

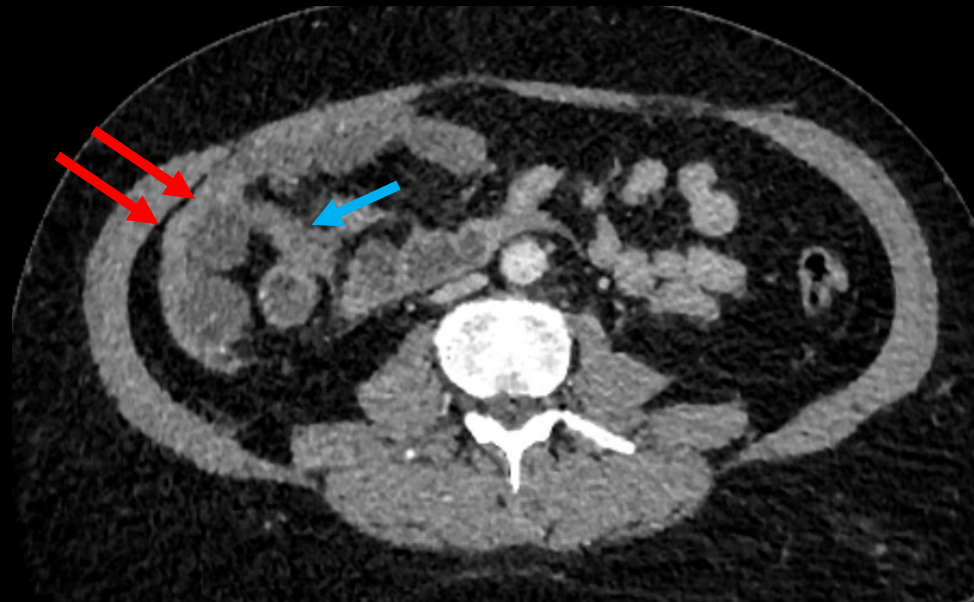
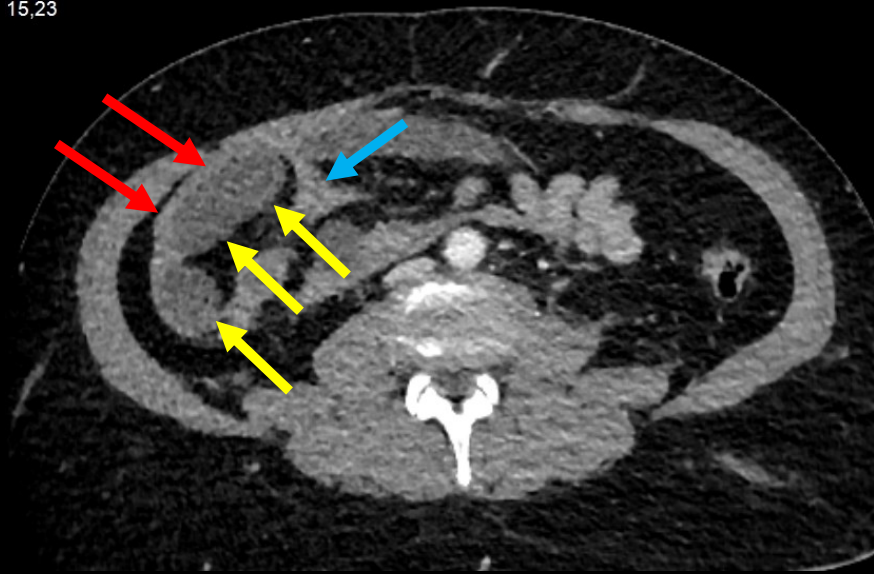


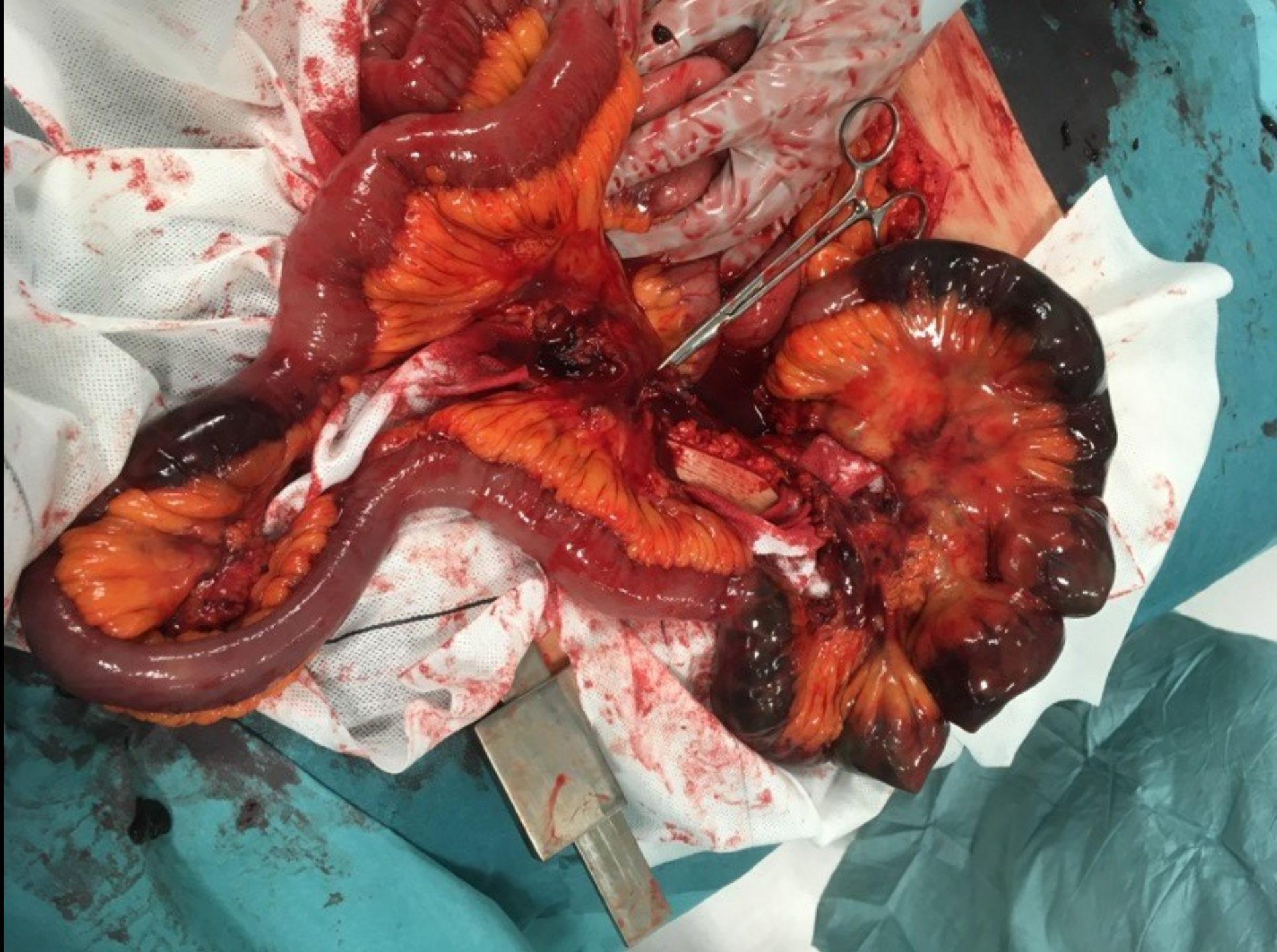
Source: Mattox KL, Moore EE, Feliciano DV: *Trauma, 7th Edition*:
www.accesspharmacy.com
Copyright © The McGraw-Hill Companies, Inc. All rights reserved.

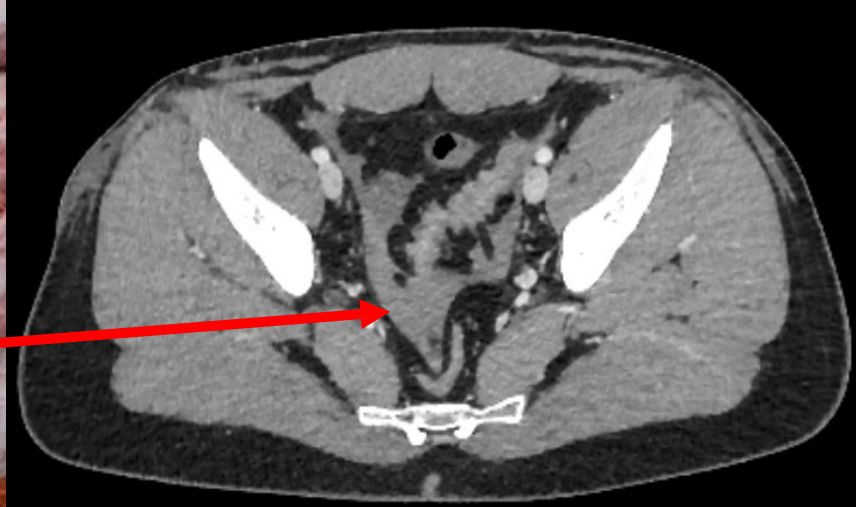
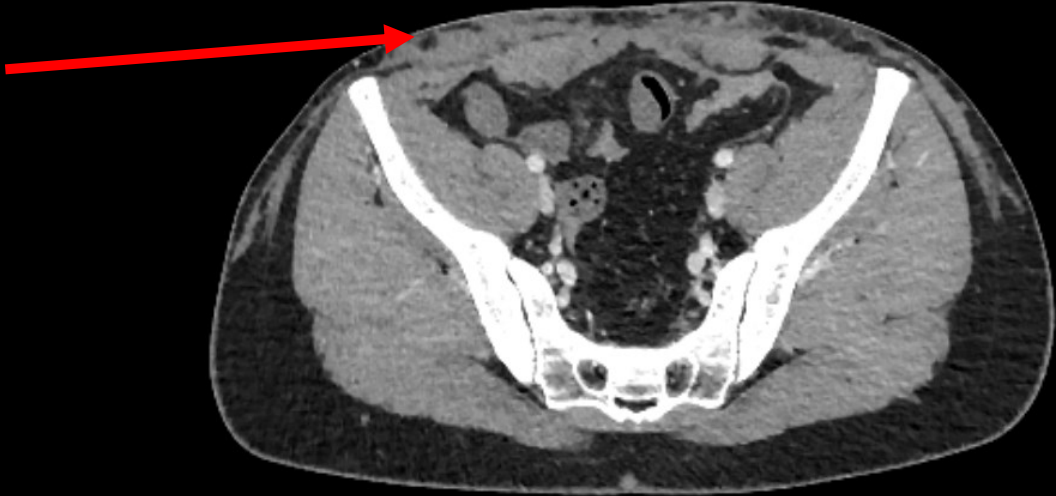
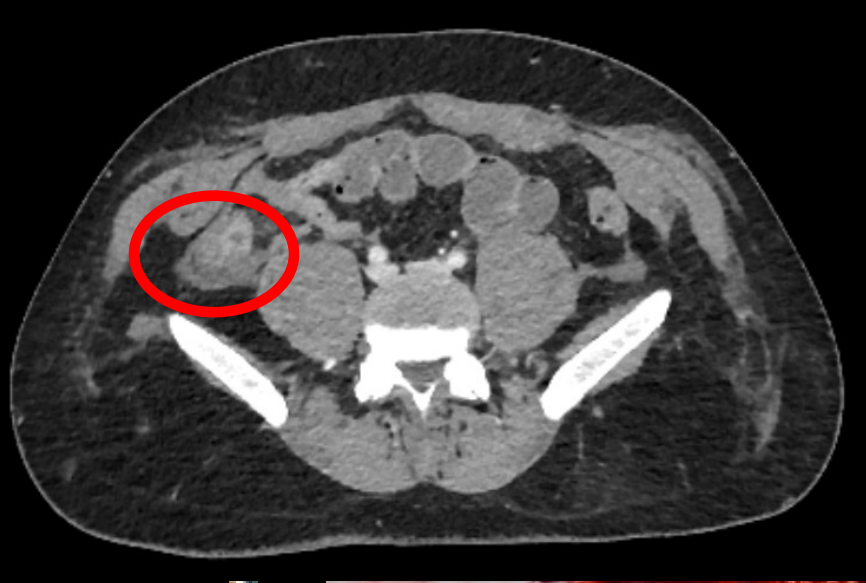
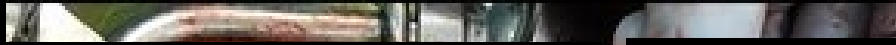
Seatbelts

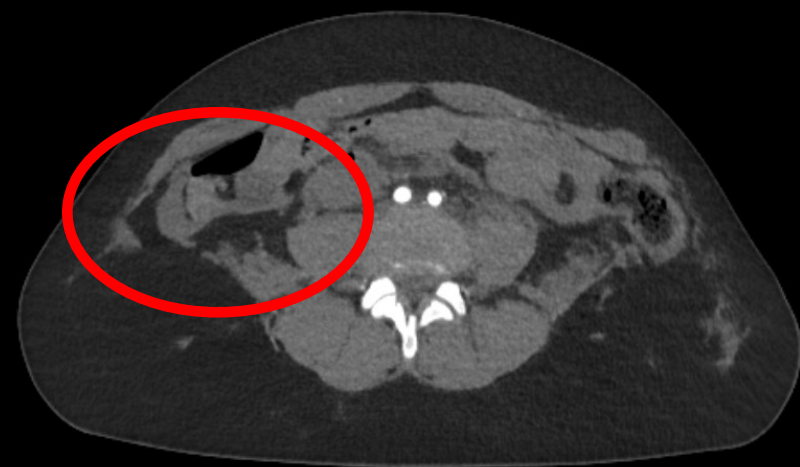
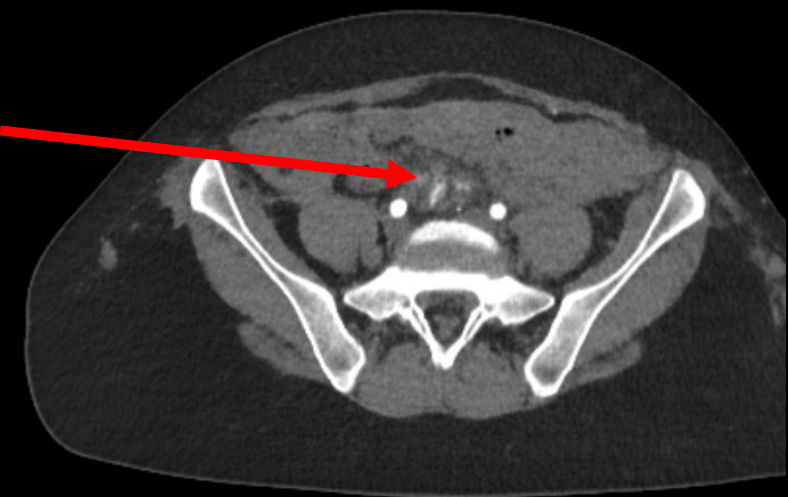


15,23

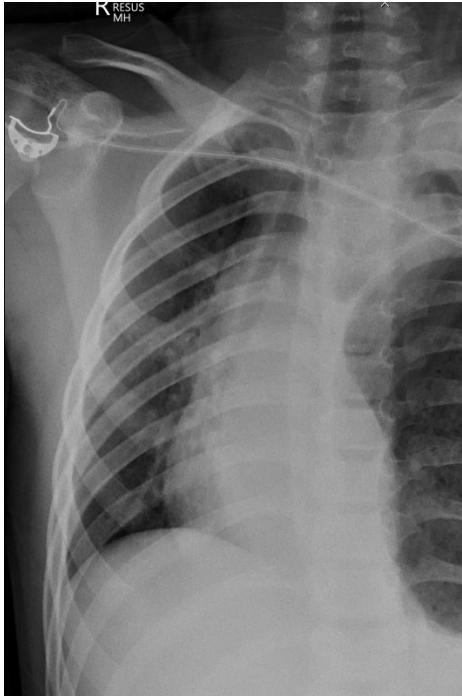




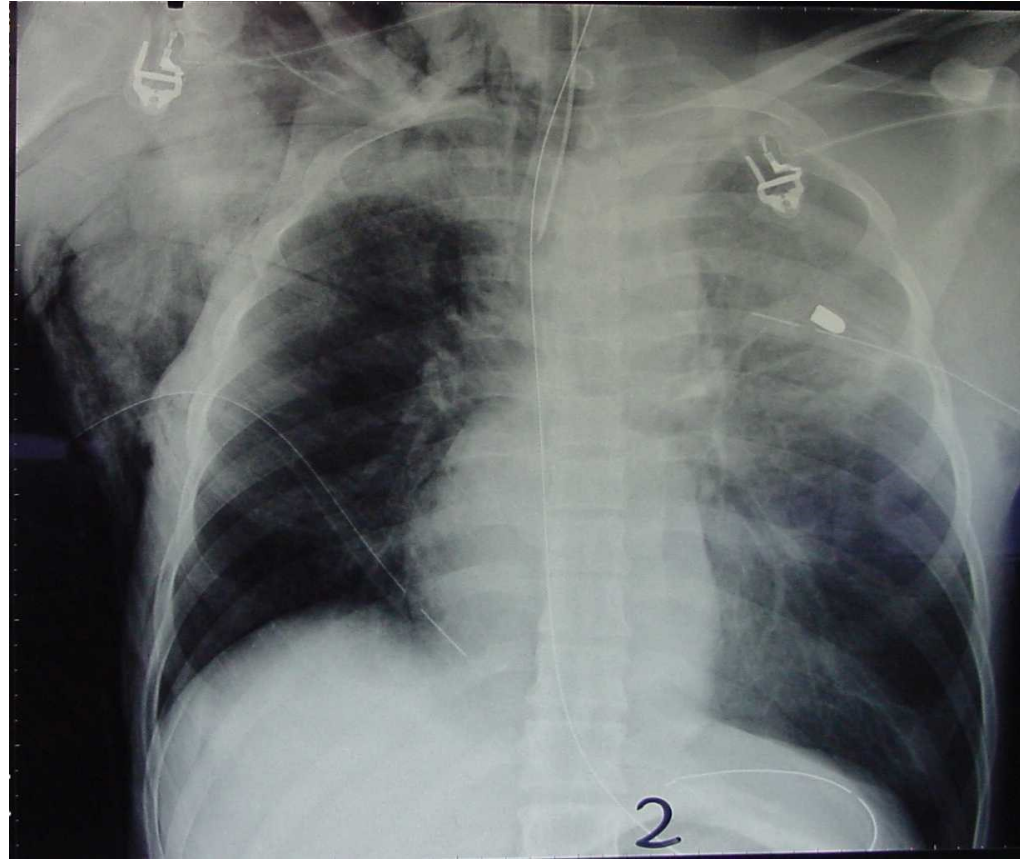




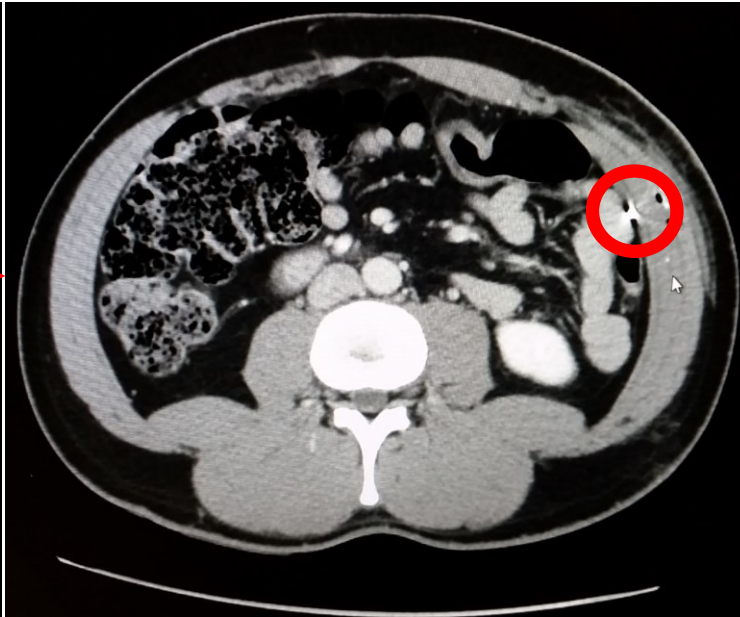
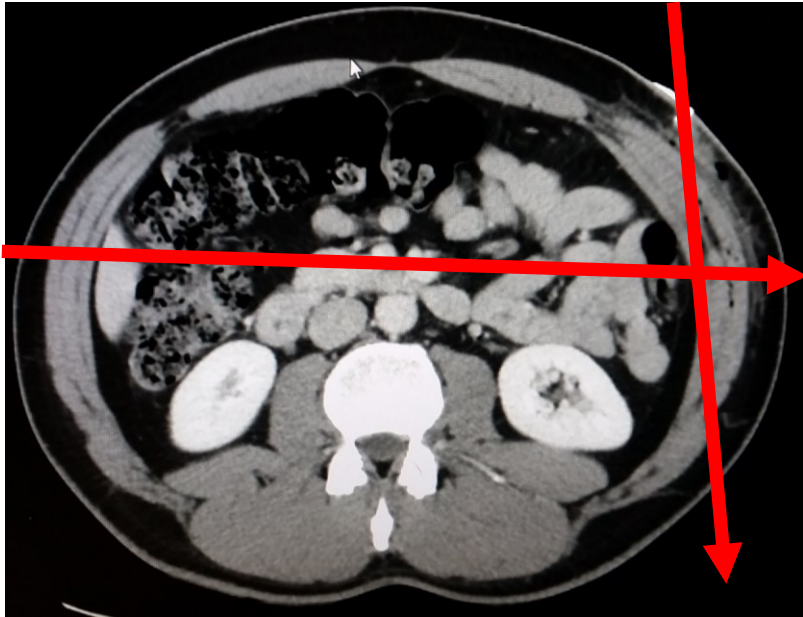
Lap belts

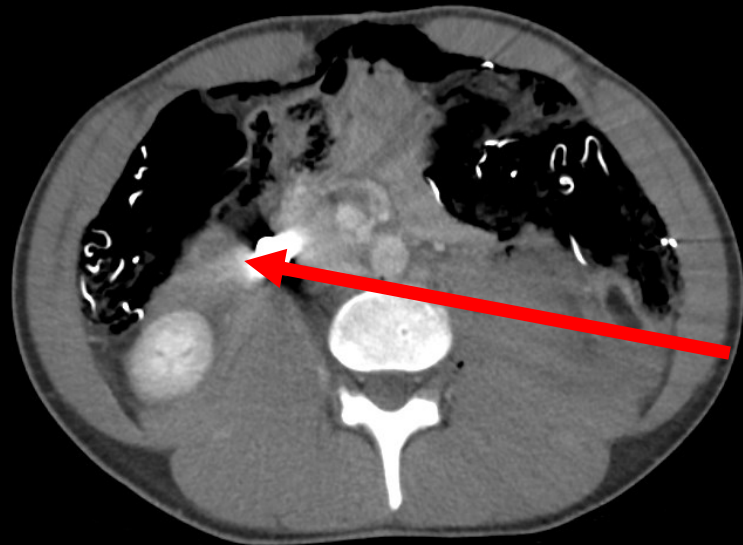
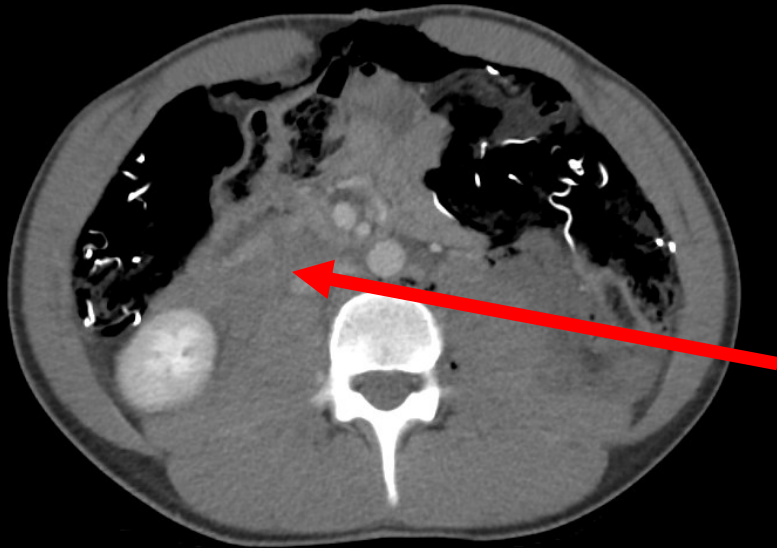
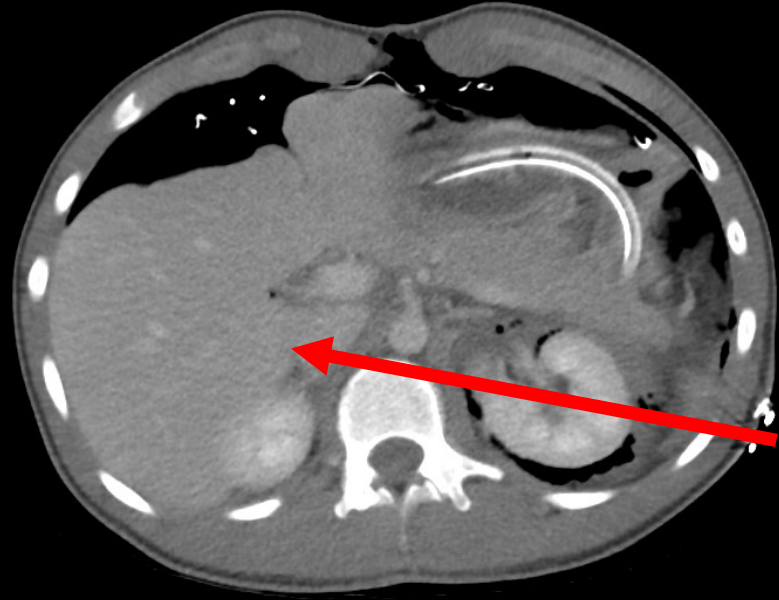


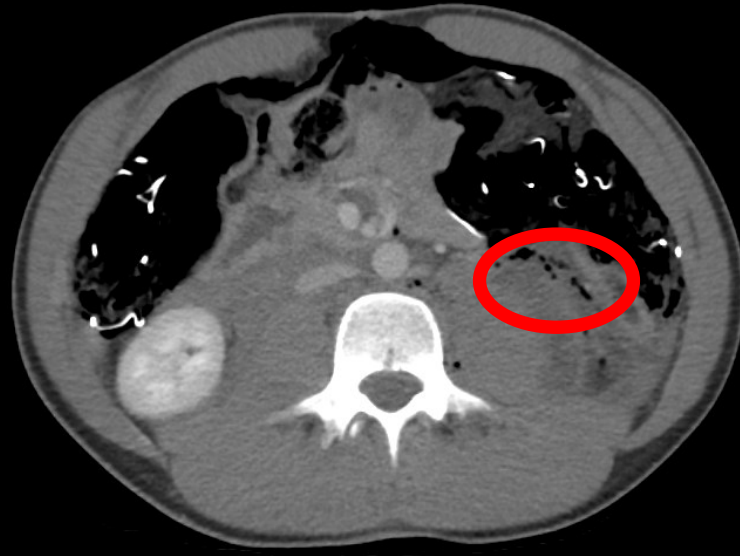
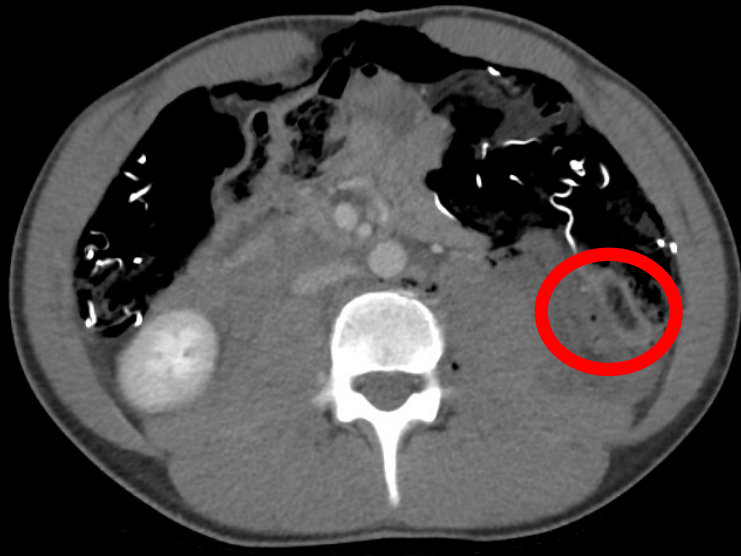
Thoracic gunshots

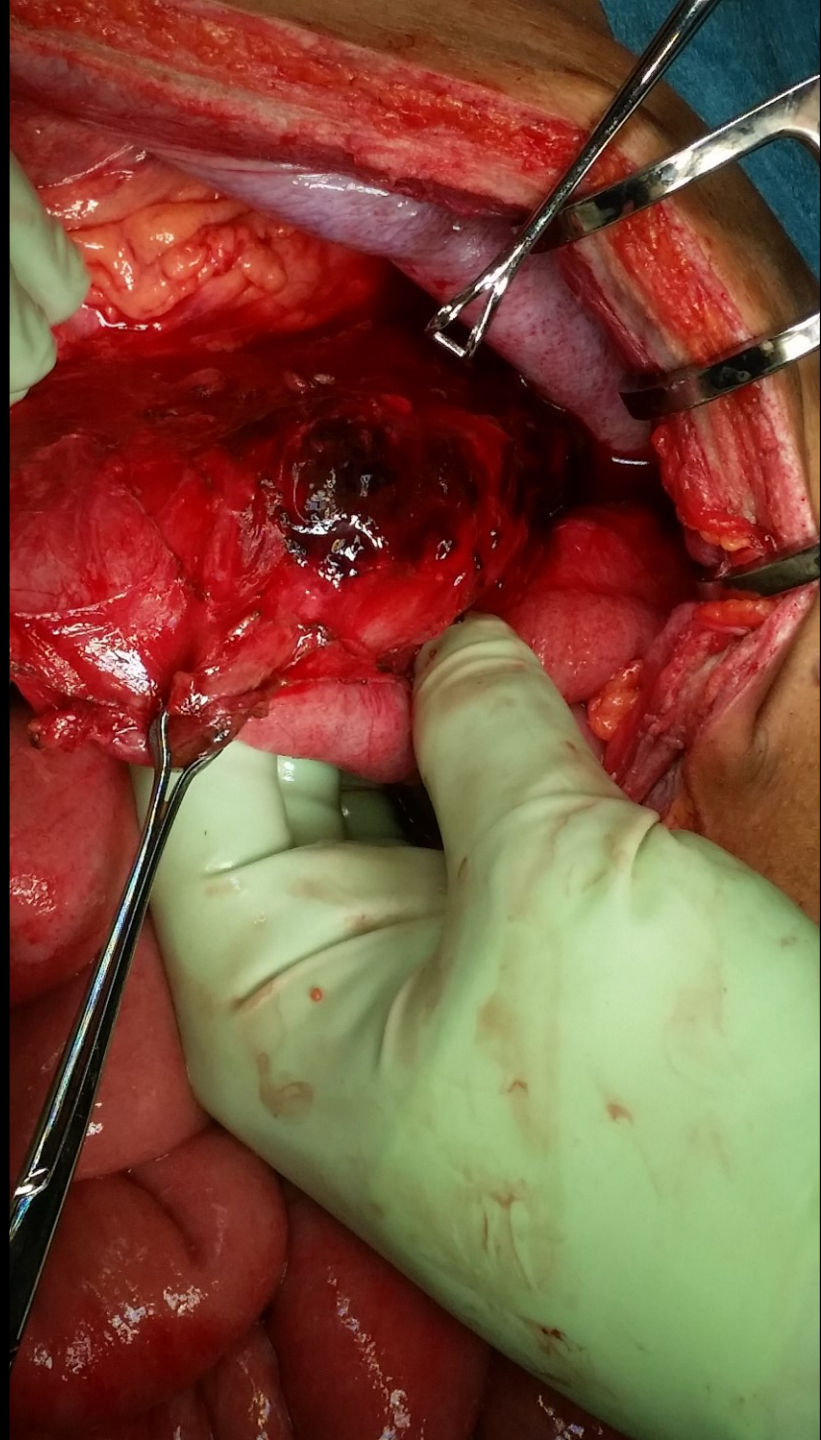
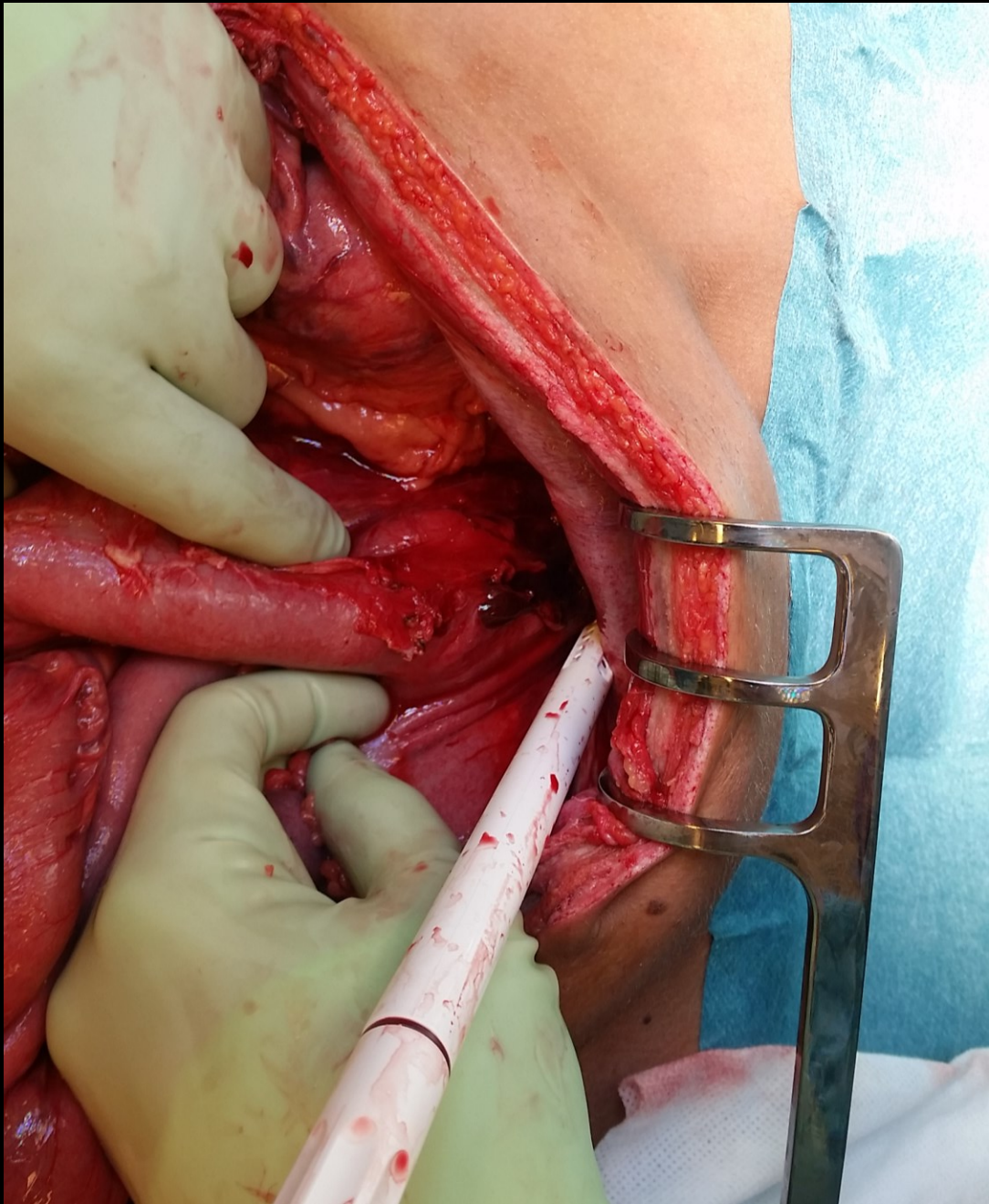


Abdominal gunshots

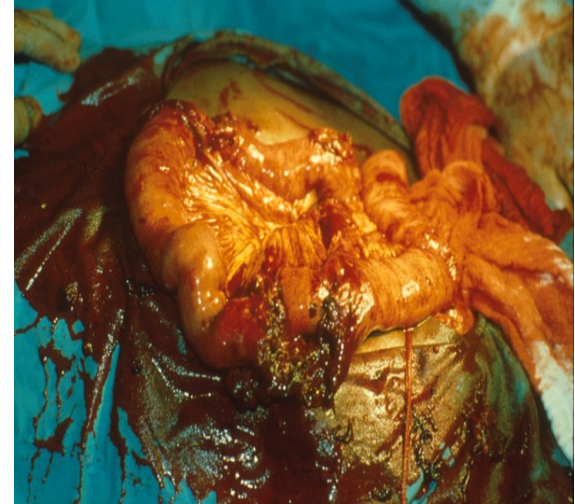
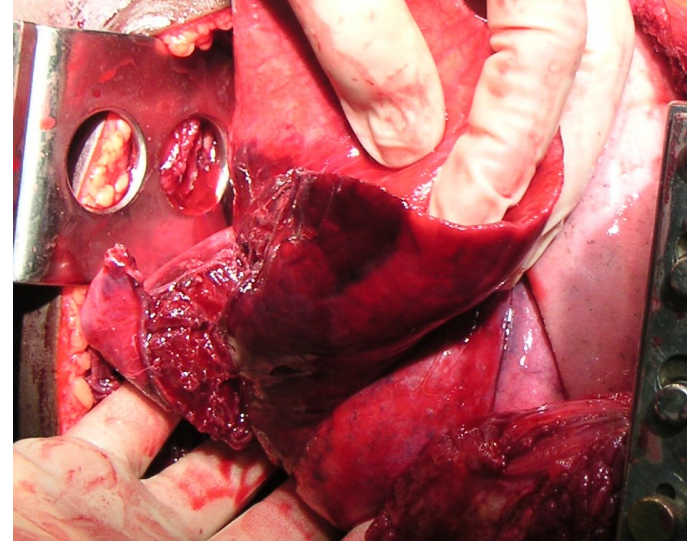
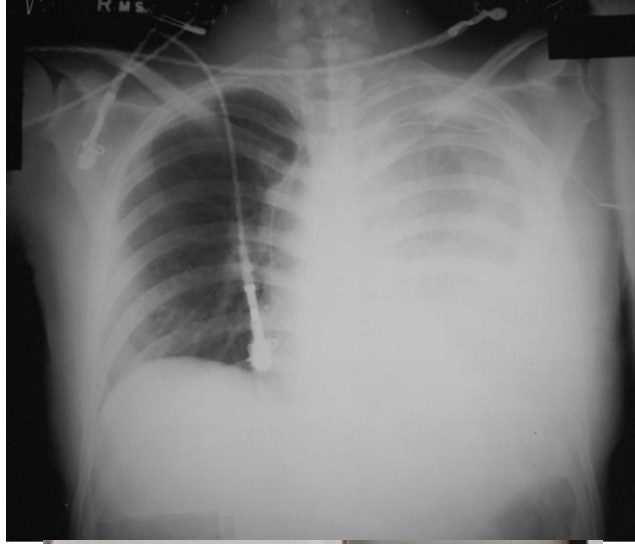
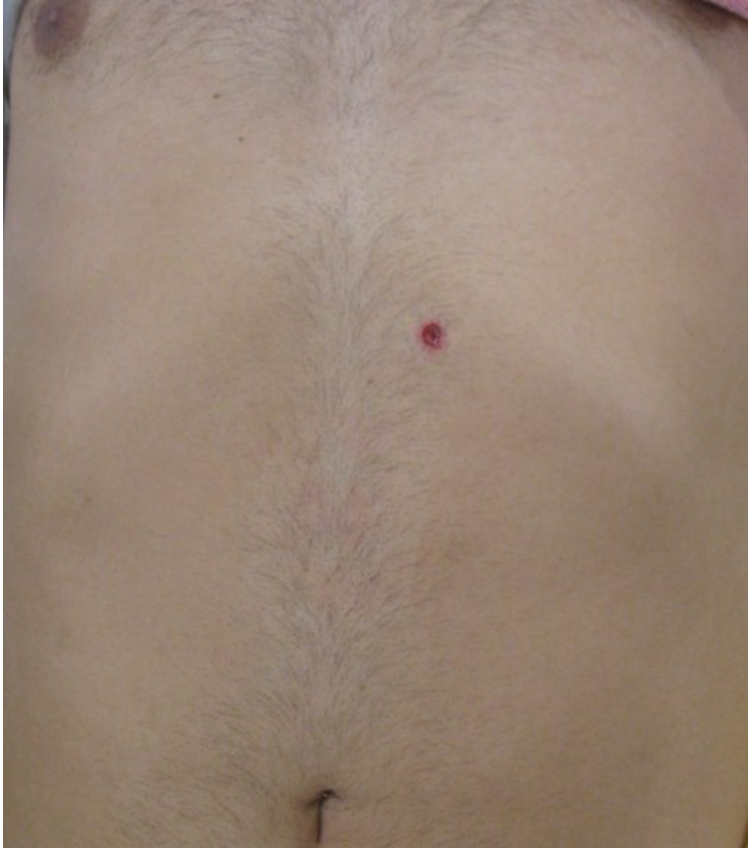




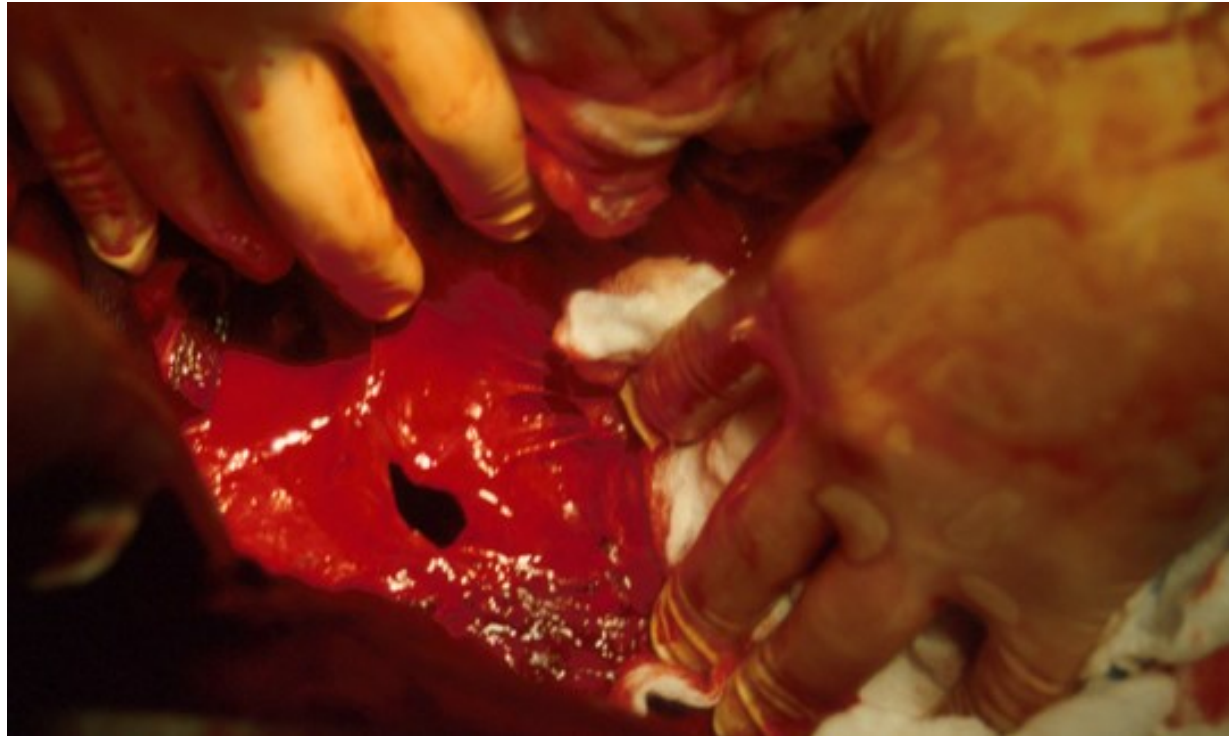




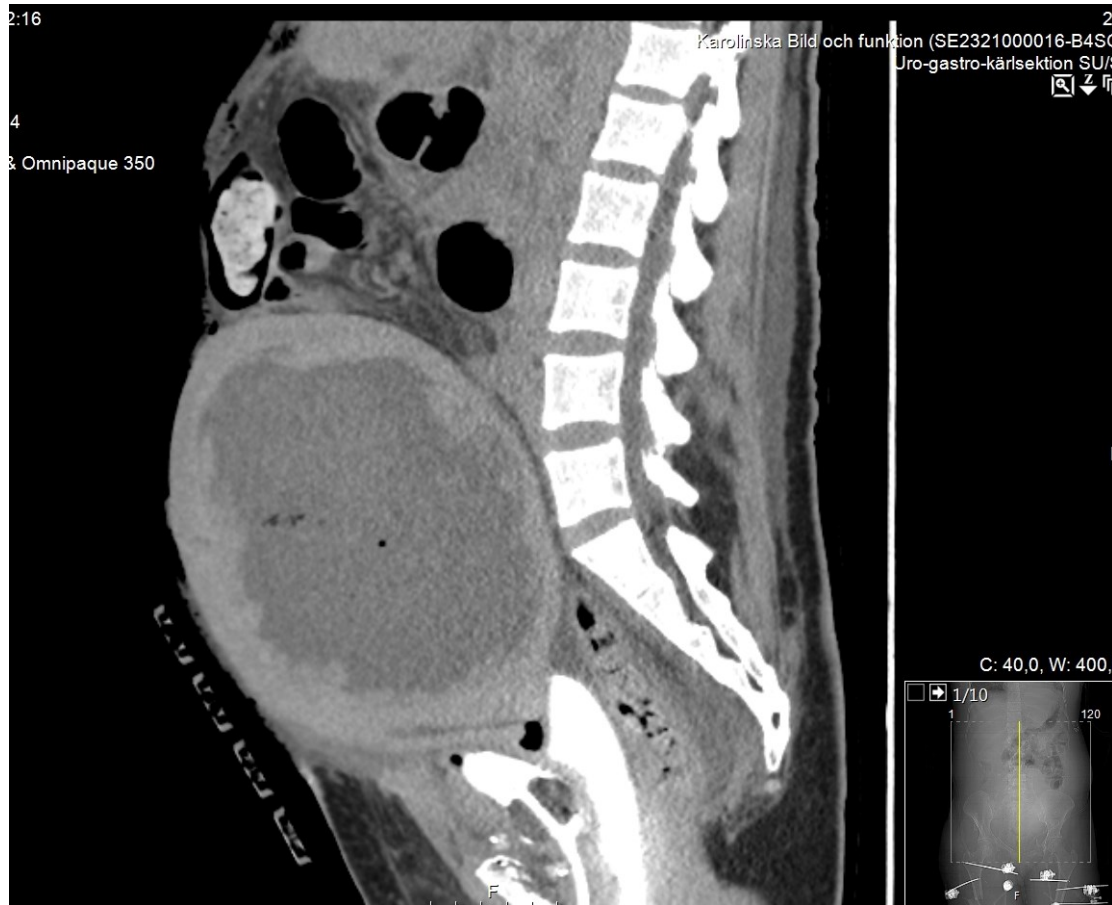
Double Jeopardy



Diaphragm



Urinary bladder





Primary Survey

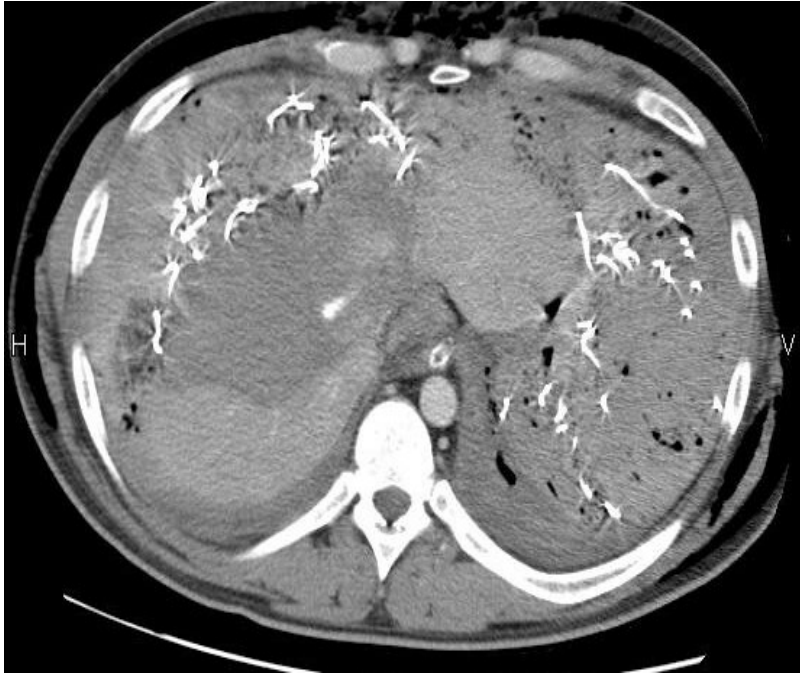


Emergent Surgery



Delayed investigation

CT after emergent surgery



Conclusion



